



HELPING HANDS

Annual Report 2007-2008

DIDI HIRSCH MENTAL HEALTH SERVICES

together, we
broaden our reach



Dear Friends,

Just by linking hands and wrists, two people can carry another who needs help. Perhaps you learned this in Boy Scouts or Girl Scouts.

In a similar way, by joining with others, Didi Hirsch Mental Health Services weaves a strong and wide safety net for thousands of children, adults and seniors. Our partners include our public schools, senior centers, places of worship, local businesses, police departments, other non-profits, and so many more—including our clients.

All of us are more effective and also more fulfilled through our connectedness, especially when it flows both ways. A truly whole person can both give and receive. Persons with mental illness and substance abuse disorders have unique talents and much to contribute. The professionals who help have much to learn from those they serve. And, sometimes the two roles overlap.

To illustrate the power of both giving and receiving, in this Annual Report we highlight four special connections between Didi Hirsch and the community. There are so many more we could share—from the 23 year-old with bipolar disorder who inspires high school students to seek help by sharing his story, to the mother who testified in Sacramento on behalf of services that might have prevented her 13 year-old son's suicide.

You also have lent a hand. Your in-kind gifts, donations and volunteer work have helped those who have lost so much hold onto their hope. We are deeply grateful to you for contributing to our network of care. We hope your life has been enriched as well.

STANLEY D. LELEWER
Chair, Board of Directors

KITA S. CURRY, PH.D
President/CEO



giving back

Satisfaction in life can come from many sources. It may come from our work or a favorite hobby; from our friends, our families or a pet. A common misconception is that life's simple pleasures are beyond the reach of those with a mental illness. Such stereotypes are deadening and isolating. The members of Didi Hirsch's Clubhouse and Wellness Centers are breaking those stereotypes all the time. Throughout the year, they look for ways to give back and support their community. From picking up flotsam with Heal the Bay to joining United Way's Walk to End Homelessness, throughout the year they give back to their community. These photos show some of our clients with ownerless pets from a local "no kill shelter." Every week they faithfully walk and nurture them while these abandoned pets wait patiently for a home. The result of their work is joy, satisfaction and a sense of being needed. All the things that all of us need.

sharing

In our society, self esteem and pride are formed not only by what we do, but also by what we have. Having little to call your own is especially humiliating for children. In families that cannot afford to exchange gifts, this can make the holidays a time of shame and sorrow instead of joy. Luckily there are people like the teachers, children and parents at Echo Horizons School who think of others who are less fortunate over the holidays. For many years, the Echo Horizons community has pooled savings and allowances to purchase gifts for the families at our Mar Vista Center. These gifts make a huge difference at Mar Vista where poverty is but one of the children's challenges, which range from anxiety and depression to a history of abuse and neglect. The children and parents at Mar Vista were so grateful that they made a thank-you scrapbook, which a student from Echo Horizons is holding in the accompanying photo. Among the many heartwarming messages and drawings inside was this note: *"I am a single mother working part time. This is a blessing because I had already had a talk with my kids telling them I couldn't get them anything but thanks to you they'll have something to open Xmas day."* In this holiday exchange, the children at both Didi Hirsch and Echo Horizons learned a priceless life lesson—that generosity is "twice blest, blessing him that gives and him that receives."



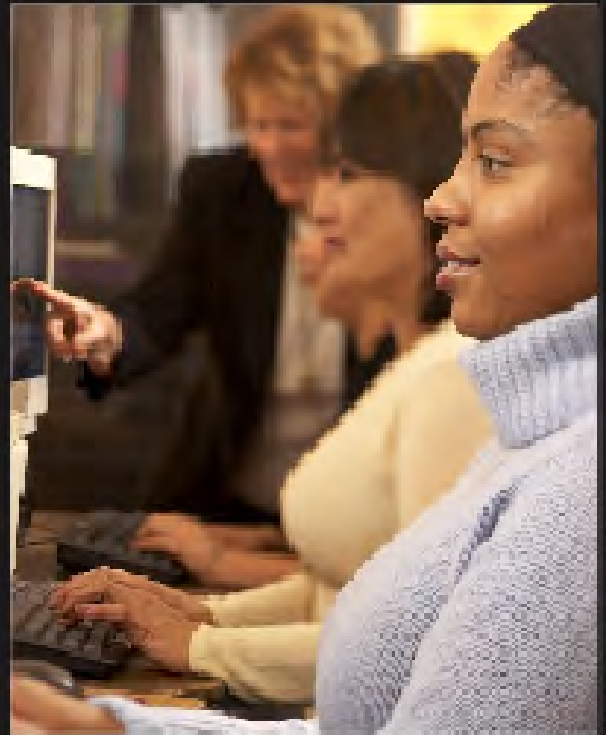


making choices

Most of us take the simple act of choosing our clothes for granted, but the impoverished and homeless rarely have that luxury. They often are forced to wear what they find or are given, not what they have chosen. This can erode one's dignity and identity. The men and women at our Crisis Residential program, Jump Street, arrive in the midst of an acute episode of mental illness. Often they come straight from the streets or a psychiatric hospital with only the clothes on their back; some even have arrived in hospital gowns. Through a special partnership with the Jewish Women's Council Thrift Store, which is down the street from Jump Street, residents have the opportunity to make their own choices while getting a new wardrobe. They take great pride in selecting clothes that suit them—in size, color and style. They are able to do this because the Jewish Women's Council gives a \$50 voucher to each person who needs clothes at Jump Street. They may use it to select clothes just as if it were their own cash. With quality merchandise and most prices under \$5.00, the money goes a long way. The chance to select one's own clothes goes even further in restoring clients' dignity and hope.

moving forward

Approaching a new person can be daunting in the best of circumstances. Approaching a new life after years of substance abuse is downright frightening. One of the few residential treatment programs in the County where women may live with their young children or even give birth, Via Avanta serves women whose lives are far more complex than our stereotypes. Although each woman has a unique story to tell, it often includes childhood trauma and poverty, domestic violence and victimization on the streets, as well as depression and other mental illnesses for which they have self-medicated with drugs and alcohol. For this reason, Via Avanta uses a supportive, communal model developed specifically for women rather than an in-your-face model developed for men. This approach meshes perfectly with the mission of the non-profit Moving Up — which builds women up by teaching them life-skills rather than tearing them down. As the photo illustrates, Moving Up helps women find work by teaching them everything from computer skills and resume preparation to how to start off an interview and how to dress to impress. Whether it's a reassuring pat on the shoulder as a woman dons a donated suit or a handshake to kick off a mock interview, Moving Up's program exemplifies the theme of this Annual Report, "helping hands."



Family of Services

Adult Services

SUPPORT GROUPS

We offer a wide variety of support groups for adults including Mindfulness Meditation, Management of Anxiety and Panic, Grief and Loss, Depression, and Socialization. In addition, we offer support groups for caregivers of older adults with Alzheimer's disease or other forms of dementia as well as people caring for frail elderly family members.

CRISIS RESIDENTIAL CARE

Jump Street and Excelsior House are crisis residential treatment centers, providing a 28-day program for adults experiencing serious problems due to mental illnesses. Residents may have been homeless or at risk of homelessness. The program gets them stabilized, provides treatment for their mental illnesses, finds long-term housing and connects them to on-going treatment programs.

INTENSIVE MENTAL HEALTH SERVICES/FULL SERVICE PARTNERSHIPS

To make accessing care as simple as possible for clients with severe mental illnesses, we offer Drop-in Centers at our Culver and Inglewood sites. At the Drop-in Centers, individuals can receive a mental health assessment, socialize, connect with other services, and more. The program also partners with the National Alliance on Mental Illness, whose peer advocates are onsite providing support and inspiration. Our Drop-in Centers also feature a newly created Wellness Center that offers an array of classes, groups and service projects, which foster physical, mental, and spiritual well-being. Members regain old

skills and develop new ones, breaking down the barriers that have isolated them from the community. With greater confidence and improved physical and mental health, they develop relationships outside the Agency, including volunteering for local community groups and returning to work. The Wellness Center is self-governed by its members, but supported by nursing and mental health staff members, who also conduct groups for participants.

OUTPATIENT TREATMENT FOR ADULTS

Programs at our headquarters and Inglewood Center provide outpatient mental health services to adults with serious mental illnesses, including schizophrenia, bipolar disorder, and severe depression. Our trained mental health staff provides individual and group therapy, case management, and psychiatric medication management.

EMPLOYMENT SERVICES

Our employment services help adults with chronic mental illness find a job. Clients learn computer skills, resume building, and interview strategies, such as how to dress appropriately for job interviews. After finding employment, clients continue to receive supportive services to help them be successful in the work place.

Child & Family Services

ASSISTANCE TO ABDUCTED CHILDREN AND THEIR FAMILIES

Didi Hirsch is a founding member of the Los Angeles Child Abduction Task Force, a multidisciplinary

team that includes the Los Angeles County Department of Children and Family Services, the Los Angeles City District Attorney's Office, local law enforcement bureaus, and the Federal Bureau of Investigation. The task force works to find, reunite, and counsel children and families that have been affected by abduction.

CALWORKS

We provide assessment and mental health treatment for people on public assistance, through a state program that helps reduce the barriers to employment and increase self-sufficiency.

CHILD ALERT

The Child Alert program offers specialized mental health services for children who have experienced or are at risk of physical, sexual, or emotional abuse or neglect. It helps children and families cope with the resulting problems, and also helps prevent further instances of abuse. Outpatient services include assessment, individual, group, and family psychotherapy, parenting education groups, psychiatric medication management, and case management for children and parents.

INTENSIVE MENTAL HEALTH SERVICES FOR CHILDREN

We provide in-home and community based services to children and families who have demonstrated a need for temporary, intensive mental health services. A therapist /case manager team works closely with families to develop their strengths, identify new ways of functioning as a family, and connect with needed resources to provide stability to the family.

OUTPATIENT MENTAL HEALTH SERVICES FOR CHILDREN AND FAMILIES

Programs at our Metro, Inglewood, Mar Vista and S. Mark Taper Foundation Centers provide outpatient mental health services to children and youth experiencing depression, anxiety, psychosis, attention deficit/hyperactivity disorder, abuse, delinquency, and/or other issues. Our trained mental health staff provides individual, group, and family therapy, as well as case management and medication management.

PARENTING EDUCATION

We offer parenting classes to the community, particularly to monolingual Spanish-speaking parents, that incorporate information on positive and effective discipline techniques, child development, anger management, and supportive resources.

SCHOOL-BASED SERVICES

We provide mental health services to children and teens in approximately 30 schools across all of the Los Angeles County Service areas where we are located. Therapists work closely with teachers to provide early intervention, prevent the development of further emotional and behavioral problems, and help increase a child's chance of success in the classroom.

Substance Abuse Services

ALTERNATIVE SENTENCING PROGRAMS

The Driving Under the Influence (DUI) 'First Offender' Program at our Metro Center is designed

for those mandated to participate in a DUI program. It focuses on heightening awareness of the consequences of alcohol and other drug impairment, and preventing further incidents of driving under the influence, through education and counseling groups. The Drug Diversion Program, also at our Metro Center, serves court-referred individuals with a substance abuse problem, who gain awareness about the negative effects of substance abuse as well as healthy coping skills to prevent future incidents leading to arrest and incarceration.

COMMUNITY ASSESSMENT AND SERVICES CENTER (CASC)

The CASC assesses the mental health and substance abuse treatment needs of CalWORKS, General Relief and Proposition 36 (The Substance Abuse and Crime Prevention Act). It connects clients to local treatment providers and serves as a resource center for alcohol and drug abuse treatment programs in the western area of Los Angeles County.

COMMUNITY PREVENTION PROGRAMS

Using a broad range of public education, skill-building and community intervention activities, this program seeks to increase individual, family and community resiliency factors that will help prevent alcohol and drug related problems in young people and their families. One of the strategies used is Beyond Bias: Think Peace, a program which teaches prejudice reduction, conflict resolution, and peer mediation.

DRUG AND ALCOHOL TREATMENT FOR ADOLESCENTS AND ADULTS

We provide individual, family, and group outpatient drug, alcohol, and other substance abuse counseling at our Culver-Palms, Mar Vista, and Metro Centers. At Mar Vista, specialized services are provided to adolescents, with a particular

focus on family intervention. At our Culver-Palms and Metro Centers, we provide drug and alcohol treatment for adults. At Berendo Middle School, which partners with Metro Center, we provide students with drug, alcohol and other substance abuse counseling in a group environment. Social skills coaching, anger management, and goal setting are just some of the tools used to help students address their substance abuse problems.

RESIDENTIAL TREATMENT (VIA AVANTA)

We offer long-term substance abuse, mental health, and domestic violence treatment to women in a safe, supportive, communal living environment. Children up to age six can live with their mothers while the women are in treatment. The children participate in developmentally appropriate activities, while mothers attend gender specific alcohol and drug abuse counseling sessions, parenting classes, and other activities to improve life and job skills, as well as overall health.

Emergency Services

SHORT-TERM CRISIS COUNSELING AND CRISIS INTERVENTION

We provide immediate short-term counseling for individuals and families experiencing a crisis following a life-changing event, such as the death of a *loved* one, loss of a job, assault, or life-threatening illness. We also provide short-term counseling for those overcome with thoughts, feelings, or habits that were once manageable and now seem out of control. These thoughts or feelings can range from excessive worry, to phobias, to an inability to cope with a loss.

24-HOUR SUICIDE PREVENTION CRISIS LINE

We operate Los Angeles and Orange County's only 24-hour

suicide prevention crisis line for people of all ages at risk of suicide. Our Crisis Line is also a resource for callers concerned that someone they know may be suicidal, as well as for law enforcement agencies requesting crisis response training from our suicide prevention experts.

SUICIDE PREVENTION OUTREACH AND EDUCATION

Staff and volunteers provide suicide education, awareness, and prevention in Los Angeles and Orange Counties through presentations to schools, churches, community groups, businesses, and law enforcement agencies, as well as to hospitals, counseling centers, and other clinical environments. We also teach those already working in these settings to train their staff about the warning signs of suicide and how to respond if someone needs help.

SURVIVORS AFTER SUICIDE PROGRAM

This program offers support for people who have lost a loved one to suicide, including eight-week groups, monthly drop-in groups, and telephone counseling. In addition, the program's Suicide Response Team works closely with the Crisis Response Team of the Los Angeles City Mayor's Office to offer immediate crisis counseling at the scene of a suicide. These trained members comfort families and connect them to community resources that will help them when loneliness and despair seem overwhelming.

Best Practices

OUTCOMES

To assure that our services remain on the forefront of the mental health and substance abuse fields, our Outcomes Department continually reviews current treatment models and developments. It gathers outcome data, which is

used to evaluate our effectiveness, adjust our practices, and set future goals. Additionally, in the face of our ever-changing society, it assures that our programs are culturally-sensitive, providing the best care to our diverse community.

TRAINING

The Center's commitment to quality mental health services is supported by an excellent continuing education seminar series offered by our Training Department. Held twice a month from October through July, mental health professionals within the agency and from the community are invited to present a variety of topics to staff. Common themes in these seminars are diagnostic issues, exposure to new treatment models, professional ethics, special issues in working with culturally diverse populations, and mental health policy.

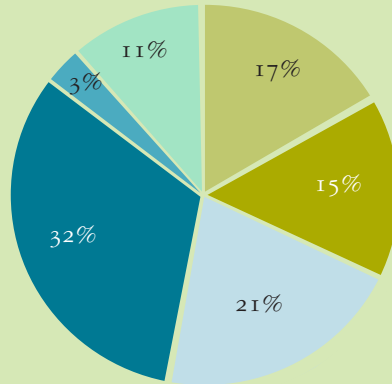
Each year, we provide approximately 25 future social workers, psychologists, marriage and family therapists, nurses, and psychiatrists with practicum and work experience opportunities through our comprehensive training program. Our psychology internship program is accredited by the American Psychological Association and our master's level internships follow regulations and standards set forth by the California Board of Behavioral Sciences.

QUALITY ASSURANCE

Because we believe that the quality of clinical documentation reflects the quality of treatment, our Quality Assurance Department trains and provides support in documenting the work of our clinicians. We also audit our clinical documentation to ensure that we comply with all legal and contractual requirements and that our programs provide cost-effective treatment.

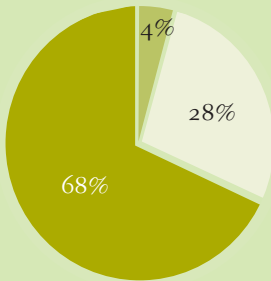
Who We Helped

44,642 CLIENTS



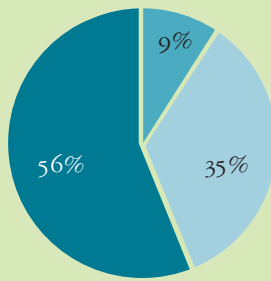
CLIENT ETHNICITY

- African-American 17%
- Asian/Pacific Islander 15%
- Caucasian 21%
- Latino 32%
- Native American/Indian 3%
- Other 11%



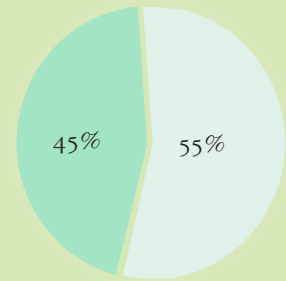
CLIENT AGE

- Older Adult 4%
- Children 28%
- Adult 68%



CLIENT BY PROGRAM

- Substance Abuse 9%
- Mental Health 35%
- Emergency Services and Suicide Prevention 56%



CLIENT BY GENDER

- Female 55%
- Male 45%

Mission Statement

Didi Hirsch transforms lives by providing quality mental health and substance abuse services in communities where stigma or poverty limit access.

ACCESSIBLE We offer services at our centers and in neighborhood settings that are welcoming, culturally respectful and responsive to underserved communities.

COMPREHENSIVE We provide a continuum of prevention, early intervention and treatment services for individuals, families and the community.

COLLABORATIVE We partner with clients, families and community groups to set goals, identify priorities and evaluate results.

INNOVATIVE We train staff and future professionals to use state-of-the-art principles in a culture of learning and team excellence.

ACCOUNTABLE We produce measurable clinical and fiscal outcomes, seek opportunities for growth, and evolve as needs change to ensure our long-term viability and value.

COMMITTED We are dedicated to erasing the stigma and discrimination associated with mental illness and substance abuse and advocating for access to care.

Donors

Didi Hirsch Mental Health Services would like to extend its appreciation to all those who generously supported us during 2007-2008: individuals, groups, businesses, foundations, and those who gave through United Hostesses' Charities, United Way, and other designated giving programs. We also thank the future mental health professionals who interned at Didi Hirsch Mental Health Services and all of our dedicated volunteers. Volunteers and interns contributed 16,679 hours of service in 2007-2008.

We Are Funded By

Los Angeles County Department of Children and Family Services
County Department of Mental Health
Los Angeles County Department of Public Health
State of California Department of Rehabilitation
United Hostesses' Charities
United Way of Greater Los Angeles

LEGACY LEADERS

Didi Hirsch thanks the following supporters for including the agency in their estate plans. Their generosity will ensure the continuation of crucial mental health and substance abuse treatment to people in need.

Kita S. Curry, Ph.D.
and Peter Curry
The Estate of Robert E. Emerson
Todd Hays
The Larkin Trust
Mary and Stanley D. Lelewer
The Judith Anne Phillips Trust
Andrew E Rubin

PRESIDENT'S CIRCLE (10,000 and above)

Beacon Capital Partners, LLC
California Community
Foundation
Chapman & Associates
Charitable Foundation
Emergency Food
and Shelter Program
Emergency Housing
and Assistance Program
First Federal Bank of California
Charlotte W. Fletcher, Ph.D.
and Jeremy Fletcher
The Irving and Barbara C.
Gutin Charitable Fund
of the New Hampshire
Charitable Foundation
Conrad N. Hilton Foundation
B.C. McCabe Foundation
Metromedia Company
Merle and Peter Mullin
Ornest Family Foundation
Andrew E Rubin
Nancy and Miles Rubin
Todd Rubin
Susan Goran Sobel
Beatrice S. Stern
The Stone Family Fund
The Thursday Lunch Group

United Hostesses' Charities
United Way of Greater
Los Angeles
Ruth/Allen Ziegler Foundation

PLATINUM CIRCLE (5,000-\$9,999)

Dear Abby
BET J
Kita S. Curry, Ph.D.
and Peter Curry
Linda and Martin J. Frank
Kate Z. Geismar
Martin Greenwald and
Cheri Renfroe Yousem
Jami and Klaus Heidegger
Janssen, L.P.
Vera Jashni, Ed.D.
Lear Family Foundation
Mary and Stanley D. Lelewer
Lilly USA, LLC
Janine and Henry Lichstein
Barbara Trent Lindemann
Macquarie Bank
Diana Meehan
and Gary D. Goldberg
Modestus Bauer Foundation/
Frances and Sherman Teller
Morrison & Foerster Foundation
Myrna Claire Oshrin
Sharon and Nelson Rising
Andrew Rosen
Gordon Rubin, D.D.S.
Jilliene F. Schenkel
Lucille Ellis Simon Foundation
Sony Pictures Entertainment
S. Mark Taper Foundation
Wyeth Pharmaceuticals

GOLD CIRCLE (1,000-\$4,999)

Aaroe Associates
Charitable Foundation
Eloise and Barney Barnett
Briony and Simon Bax
Jacqueline Berz
Rita and Ernest Bogen
Stanley Bogen
Amy and Todd Bomberg
Judy and Bernard Briskin/
Arden Group Inc.
Leslie and Steven Carlson
Harold C. Chancellor
Karen and Ted Coyne
Nancy Daly
Eunice David
Davis Wright Tremaine LLP
Damien Doss
Beth and Ronald I.
Dozoretz, M.D.
Dreier, Stein & Kahan LLP
East West Bank
Joel Edstrom
Barney and Patrice
Hirsch Feinstein
Paul Ferrante
Ella Fitzgerald
Charitable Foundation
Patsy R. Flanigan/
Flanigan Farms, Inc.
Bitsey Folger
Forest Pharmaceuticals, Inc.
Full Circle Recycling Company
Harriet and Richard Gold
Mae Goodson
Amy and Andrew Gordon
Louise and Paul Greenberg
Harman Family Foundation
Helms Bakery/
Walter N. Marks, III
Mary and Hank Hendler
Rebecca Metzger Hirsch
and R. David Hirsch
Charlotte Hughes
and Christopher Combs
Industrial Metal Supply
Company/Neil Sherman
Judy G. Jackson
and Douglas H. Gaither
Karen E. Kennedy
Jeffrey Khteian, C.I.D.
Kendall and Doug Knaus/
Means-Knaus Partners
Suzan Levin/Jay and Rose
Phillips Family Foundation
Gail Kamer Lieberfarb
and Warren Lieberfarb
Paula and Barry Litt

Susan and Howard M. Loeb
Dede and William Mandel, M.D.
Kacey Doheny McCoy
and Peter McCoy
Merrill Lynch Matching
Gifts Program
Miles Electric Vehicles
The Milken Family Foundation
Sandra Moss
Deena and Edward Nahmias
Thomas Neerken
Cathryn Connors Palmieri
and Victor Palmieri
Probity International Corporation
Sheila and Tom Rabaut
The Honorable Vicki Reynolds
and Murray Pepper
Janice and Benjamin Reznik
Kim Rubin and Jim Kaye
Richard E. Rubin
Thomas L. Safran
Heidi Schulman
and Mickey Kantor
Shirley and Ralph Shapiro
Madeline and Robert Sharples
Shout! Factory/
Shari and Richard Foes
Christina and Mark Siegel
Sam Sobel
Bley Stein Foundation
Marilyn and Jeffrey Stern
Bonnie Strauss Gould
Strauss Foundation/
Sandra Krause
The Streisand Foundation
Universal Studios
Claire and D. Michael
Van Konynenburg
Sylvia Weisz/David and
Sylvia Weisz Family
Philanthropic Fund
Carol and Joseph Weller
Beth Whitehead and John Rogers
Lisa and Michael C. Wierwille
Women's Fellowship
Neighborhood Church
Connie and Graham Yost
Harriet Zaretsky and Steve Henry
Eileen and Robert Zigman

SILVER CIRCLE

(500-\$999)

Betty and Jerome Abeles/
Kahn-Abeles Foundation
Richard Abeles/
The Abeles Foundation
Afinety, Inc.
Faye Beland
Marilyn and Alan Bergman
Cynthia and Thomas Bryan
Cars 4 Causes
Lisa and Joel Cassel
Maureen Clavin
Bobbi Elliott
Evelyn and Norman Feintech
Vivian Feintech
Allen Greenfield
Marjory Feldman
Patricia Finkel
Deborah Fischler
Judith and Lionel Fortin
Frances Franco-Valdez
Eileen and Jon Gallo, Ph.D.
Alice and Ira Handelman
Elizabeth and David Hasbrouck
Beverly Hasson
Amy Hasten-Murphy
Honoring Life
Warren Jason
Pamela Johnson
and Thomas Bonvenuto
Terry Kasuyama
Evelyn and Irving
Kellogg Foundation
Rosemarie Kochan
Sharon M. Kopman
and Jason Kay
Jacqueline and Joseph Leimbach
Peggy and Bernard Lewak
Loeb Kosacz & Sundberg LLP
Amy Madigan and Ed Harris
Inki Min
Carol and Jerome Muchin
Elayne and Geoffrey Nathanson
Gail and Malcolm O'Donnell, Jr.
Brenda and Budge Offer
Wendy and Fred Ordower
Peet's Coffee & Tea
RAND Corporation

Eden and Gerald Rafshoon
Rasmussen Foundation/
Kathleen Rasmussen
Cynthia and David Roberts
Alison and Jonathan Roth
Paula and Allan Rudnick
Denise Sacks
Debra Sartori
Janie Schulman
and John Caragozian
Suzanne Schwartz
Abby Sher
Judy and Allan Sher
Alan Sieroty/Sieroty Co., Inc.
Shana and Scott Silveri
Audrey and Barry Sterling/
Iron Horse Vineyards
Deborah and Ellis Stern
Jacqueline and Arnold Stern
Sandy and Jon Stern
Kara and Todd Sugimoto
Transamerica Insurance
and Investment Group
Susann and Butch Ventzke
Wescom Credit Union

BRONZE CIRCLE

(100-\$499)

Marlene Abel
Jane and Richard Abrams
Laurie Ziki Ackerman
Julia Adams
Aetna Foundation Matching
Gifts Program
Afinety, Inc.
Gina Albi
Mark Allec
Joan and Paul Almond
Laura Alpert
Patricia and Merwyn Anesetti
Judith C. Angel
and Robert J. Salvaria
Lisa A. Arnold
Mary and Shin Asami
Beverly Atkins
Andrea Auerbach
Bank of America Matching
Gifts Program

Judy Barber
Elena Barcia
Donald Barnett, M.D.
Barrett Family Foundation
Anne Barry
Bruce Beach
Carol and Terry Becker
Lorraine and John Becker
Dennis Beechler
Joan Willens Beerman
and Rabbi Leonard Beerman
Cindy and Juan Carlos Begazo
Terry and Lionel Bell
Paul R. Benson, M.D.
Thomas Bent
Joyce and Tom Berger
Richard L. Bernacchi
Michele Biagioni
David E. Birney
Betty Kay Bjornsen
Ann D. Blanchard
Vivi-Ann and Harold
Blankstein
Lois and Sam Bloom
Marilyn Bloom
Laura J. Blumenthal
Stanley Boganey
Audrey Boggs, Psy.D.
Esther and Norman Bolker, M.D.
Judith Bolker
Arthur Borgquist
Anne and Steve Bosma/Michael
Bosma Memorial Fund
Dorothy and R. William Bowdon
Roger Bradford
Lonnie and Michael Bravman
Barbara Breger
Mary Ann and Robert Brigham
Matthew R. Brigham
Theodore Brockish
Nancy J. Broderick
Lana Ayeroff Brody
Renee and Harold Brook
Deborah Brown
Denise Brown
Karen and Michael Bruckner
Buffalo Exchange
Roslyn Burkes
Marilyn and Joe Cahn

David H. Calloway
Linda Cannon
Joan Caplis
Grace Carley
Robin Carroll
Joan and Doug Carter
Cedars-Sinai Medical Center
Susan Celentano, M.F.T.
Shirley Chami
Mavis Chan
Connie Chein, M.D.
Serena Chen
Ann-Marie Christian
Pauline Chusid, M.D.
and Jerry Williamson, M.D.
Clear Purpose Chiropractic
The Clubhouse
Alan J. Cohen
Richard Cohen
Sharleen C. Cohen
Shelley M. Cohen
Barbara and Melvin Cole
Craig Cooper
Patricia Costales, L.C.S.W.
Susan and Khalil Coudsy
Ted Coudsy
Areta Crowell, Ph.D.
Rebecca Danelski
and Dan Hyslop, M.D.
Curt Darden
Dawn Deckman-Moeller
Betty Denitz
Nancy and Michael Derian
Mary Louise DiVito
Fran and Roger Diamond
Kip Dickie
Amy Disparte
Lee Draper, Ph.D./
Draper Consulting Group
Evelyn and Gilbert Dreyfuss
Gary Duboff
Ruth W. Dunn
Robert Dworkoski, Ph.D.
Steve and Lori Edwards
Elyse Eisenberg
Susan and Robert Emmer
Employees Charity Organization
of Northrop Grumman

Karen Engelhardt	Frank Groff	Thomas W. Jackson	Larabar
Eileen Pollack Erickson	Claudia and Paul Grossman	Janet and James Jacobe	Virginia Larson, M.D.
Sandra Erickson	Julianne Grossman	Lynda and Mitch Jacobs	Monica Latta
Andrew Erman	Jennifer and Bud Gruenberg	Doris S. Jacobson, Ph.D.	Laura and Gary Lauder
Sari and Aaron Eshman	Nick Gutierrez, M.D.	John James	Judith Laurence
Debra Estes	Renée and Paul Haas	Linda and Jerry Janger	Jean Lauricella, M.D.
Joan and Fred Evans	Chelsea Hadley	Jolie and Jon J. Jashni	Marilyn B. Lawson
Evergreen Cleaning Systems, Inc.	and Justin Reinhardt	Jane Jelenko and the	Jennifer and Lee Leibman
Dvora Ezralow	Karen Haigh	Honorable William Norris	Steve L. Leighton
Evan Fabricant	Mary Halligan	Michael Johnson	Rita and Charles Levin
Norman L. Farberow, Ph.D.	Eric Hammond	Robert Johnson and Linda Klein	Anita and Burt Levinson
Paul Farmanian	Angela Hanglow, Ph.D.	Michael Jones	Mila and Joel Levy
Xavier Fendt	and Han Gunn	Tina Jones-Monroy	The Levy Living Trust
D'Lynda Fischer/Sporteve	Ethel Hansen	Diana and Aaron Judovits	Lincoln Retirement Services
Dick Fischer	Nancy and Michael Harahan	KH Consulting Group	Teri and Baruch Link
Dina Fisher	William J. Harris	Gayla Kraetsch Hartsough, Ph.D.	Robert E. Litman, M.D.
Maureen and John Fisher	Jan and Steve Haruta	Leslie Kanner	Tod Lipka
Barbara and Patrick Fitzgerald	Renée and David Hasson	Courtney Kanner	Cindy Loeb and Robert Izenberg
Cindy Flagg	Jeanne Hayashi	Jean Katz	Robert Long
Christopher Fletcher	Nora and Ariel Hazi	Mitsuko Kawaguchi	Susan and Jonathan Loring
Irma Flores	James B. Healy	Karen Kay	Los Angeles Times
For the Child	Elizabeth and Mervyn Hecht	Vivian and Jerry Kelley	Judith F. Lovell
Nichole Force	Katie Hedberg	Wendy and Asher Kelman	James Loveman
Vivian Fountain	Ron Hefler	James Kennedy	Jerry Lubin
Gail and Frederick Fox	Hemming Morse, Inc.	Margie and Souren Khteian	Helen Luther
Diana and Robert Friedman	Marcia and Paul Herman	Larry C. Kidwell, D.V.M.	Kate Lyon
Janice M. Frisch, Ph.D.	Stew Herrera	Dana Kiesel, Ph.D.	Lorraine Lyou
and David M. Frisch, M.D.	Kirsten Hertz	and Paul Kiesel	M & D Auto Parts
Joanne and Edward Froelich	Carolyn and Stephen Hiller	Nancy Kipper	Mary Lu and John MacCorkle
Lucille Fuhrman	John Kevin and Margaret Hines	George Kitamura	Andrea Madden
GE Foundation Matching	Elaine Hoffman and Jack Cherbo	Jeanette Kleeman	Donna and Richard Mann
Gifts Program	Lorinda and Peter Hohenbrink	Tom Kline	Frank Maranto
Rebecca Gaba, Ph.D.	Jeannette Hollow	Ellen Knable	Alan Markowitz
Barbara and Robert Gale	Adrienne and Elliott Horwitch	Cynthia Kolodny	Wendy Marlett
Donna Ellman Garber	Lucy Horwitz	Katherine Kolodziejski, Ph.D.	Zahid Masood
Doreen Garcia	Roberta Howard	Cynthia and John Kondon, Jr.	Mattel Children's Foundation
Karen Gasper	Judy Howell	Sandri Kramer	Matching Gifts
Stefan Gaudio	Mathew Hurst	Kravitz Davis Sansone	Roberta and Frank Mattoon, Sr.
F. Gaviña & Sons, Inc.	Carol Hyman, M.D.	Lisa Krone-Schmidt	Joanne May
Nancy Gettelman	Steven Hytry, M.D.	Roger Krost	Mary Maurer
Charles Gillikin	Lonnie Israel	Machiko Kubo	Jeffrey McGowan
Jen and Leon Glover	Aleks Istanbulla	Diane Kubrin and Karen Weiss	Sue and Thomas McCabe
Donna and Russ Goodman	Lucille Ito and Robert Corn	Francine Kubrin	Bernice and James McCombie
Madeline and Eugene Goodwin	Mark Ivener	Greg Kushner	Sharon McDaniel, P.M.H.N.P.
Marcia and Saul Gordon	Stefanie and Jason Ivener	L. A. Leggers	Darren McGregor
Barbara and David Gralnek	Bob Iverson, M.D.	Oliver La Plant	Gail L. McInnes
Norma and Harvey Greenberg	and Marilyn Iverson,	Mohammad Nz Labbaf	Cynthia McLean
Richard J. Greenberg	M.A., L.M.F.T.	Marcene and Bruce	Janet Lee McLellan
Beth and Geoffrey Greulich	Candace and John Jackson	Landres, M.D.	Duane E. McWaine, M.D.
Sheba and Howard Grobstein	Nathaniel Jackson, Ph.D.	Miriam and Howard Landres	and David Huebner

Media Impact	Gloria Price	John Schwartz	DeeAnn Thompson
Donald Mellman, M.D.	Michael Propper, M.D.	Debbie and Bill Sean	Karen Thomas
Harold Melman	Rabobante	Sonia and George Segal	Jackie Tipper
Judith and John Menne	Lillian Raffel	David Seltzer	Allison Tokunaga
Edith Metzner	Debra Ramsey	Mary Senzaki	Asao Tokunaga
Carolyn and Bill Meyer	Nicki and Tom Rankin	Sue and Steve Shackelford	Anita Trush and Daniel Frydman
Meyer Corporation	Alyson Reed	Linda Shahinian	Naomi Tsuha
Microsoft Matching	Daniel Relles	and Herb Schiff	Twentysixers, LLC
Gifts Program	William J. Reynolds	Ilona K. Sherman	Hayley E. Tyler
Military Women in Need	Edith and Marshall Reznick	Mary Sherman, M.D.	Irma and Henri Van Dam
Karen and Tom Miller	Ramona Ripston	and Jeff Sherman	Andrea and John Van de Kamp
Lee Miller	Lori and Gregory Robinson	Shirley and Russell Sherman	Mely and Stan Vander Vegt
Nancy and David Milstein	Carol Rose	Judy M. Shippel	Judy Vann
Marisela and Hank Mitchel	Beverly and Leonard Rosen	Harvey Shore	Rita Vennari
Deborah and Adam Mogil	Jeff Rosen	Jay Shore	Jessica Verano
Maggie and Rick Mogil	Suzy and Paul Rosenberg	Diane C. Siegel	Mark A. Vierra
Monteiro Rose Dravis Agency	Patricia Z. Rosenburg	Patricia Simpson	Dawn Vo-Jutabha, Ph.D.
Mayumi and Wilson Morishita	Barbara Rosenfeld	Shkira Singh	Eileen J. Vogt
Vivien and Allen Morita	Helen Rosin	Ann N. Smith	Donna and Nobert Wabnig
Wendy and John Moskal	Erika Rothenberg	Beverly A. Smith	Ann R. Wallace
Judy and John Motz	Dinah Rowley	Miriam and Dale Smith	Chuck Wallau
Roberta Muller	Zacky Rozio	Pompea and Fred Smith	Gary Waller
Matt Mullin	Anne and Jesus Rubio	Ruthie and Bud Smoot	Hope Warner
Kellie Mullins	Michelle Ruff	Rebecca Snider	Kim and Thaddeus Wasung
Roberta Nelson	Susana and Kenneth D. Rushing	Valerie Sobel	Barbara Webster
Therese Nery	SAP Matching Gift Program	William Sobel	and Marc Popkin
New Directions	Kathy Sadamitsu	Nancy Lelewer Sonnabend	Jeri Weiss and Walter S. Baer
Shari and Kenneth Nishi	Mark Sadamitsu	Sue Sousley	Stephen Weiss, Ph.D.
Linda and Dean Nobori	Candice Saito	Ileana and Robert Stahl	Sheryl Weissberg
Marilyn and Alan Nobori	Ruth and Don Salk	Mark Stanko	Roberta K. Weissman
John J. O'Neill	Dorothy and Abe Salkin	Patricia and Jim Steele	Sharon Wells
The Otheroom	San Antonio Catholic Church	Diane and Joel Steiger	Katharine Werber
Ana K. Nogen	Youth Ministry	Step Up On Second	Westat
and Thomas Morphopoulos	Diana Saporito	Gretel and George Stephens	Western Telecommunication
Richard Patrick	Susan and Morris Savin	Howard Stern	Consulting, Inc.
Lisa Pemberton	Lorraine D. Sax	Louis A. Stern, Jr.	Holly Whiting
The People's Choice Charities	Kimberly and James Schaffer	Sydney and Jon Stern	Harriet Wilburne, M.D.
Ellen Perlmutter, Ph.D.	Nancy R. Schauer	Sharon and Doug Stewart	and Rick Curcio
and Edward Jones, Ph.D.	and Tom Williams	Thomas Stoudt	Nancy Wileman
Nancy and Edward H.	Evan B. Schenkel, Esq.	Daniel Sullivan	Michele Willens
Phillips, M.D.	Isabella and Richard Schenkel	Lenore S. Sussman	Cecile and Richard Willis, D.D.S.
Patricia and Judge	Margaret and Jack Schlaifer	Gigi Sutila	Carmel and Rudolph Winkler
Donald F. Pitss	Dorotha and Jack Schlanger	Margery Tabankin	Elaine Winters
Karen Kay Platt	Laurie Schneider	and Earl Katz	Carol Wood
Jackie and Adam Popper	Ruth and Robert Schriebman	Cheryl Tabellion	Robert Wood
Rissa and Chuck Potter	Richard Schroder	Rosa and Conrad Tang	Drucilla Wood-Beckwith
Mayra and Agustin Prado	Hannah Schulhof	Charlotte Tarantola	Nina Woodrow
Marie and David Prenatt	Jill and Paul Schulman	Frances and Sherman Teller	Randi Woodrow
Barbara Price	Majorie Schuman, Ph.D.	Kirsten and Steve Tellez	Thomas Woodruff

Helen B. Wu
Garret Wyner, M.D.
Lisa and Franklin Yeager
Cheron Zekavat
Deborah Pikul Zent
Josh Zuboff

FRIEND (50-\$99)

Ann and Paul Abe
Debbie Andorka Aceves
Terry and Grant Adamson
Azadeh Afsahi
Esperanza Aguilar
Anuradha Aithal
Gina Albi
Victor Alcantar
American Martyrs
Catholic Church
Amgen Foundation
Gordon Anderson
Jennifer Anderson
Linda Anderson
Jo Ann Andrick
Keith Anyon
Reginald Archambault, Jr.
Oleatha Mae Arnold
Association of Community
Human Service Agencies
Miriam Baer and Arthur Hoyle
Carol J. Baker
Philbert Bangayan
Juanita and Sammy Banks
Kyrie Bass
Noreen and Alan Baum
Mary Christine Beck
Angela and George Bellias
M. Christina Benson, M.D.
and Kenneth Brooks
Wells, M.D.
Alice Berk
Irving H. Berkovitz, M.D.
Andrew Berman
Kim Bernard
Sara Bock
Silvia Boggs
Regena Booze
Margaret Briggs
Diane C. Brinegar

Carol and Bob Brockish
Timothy Brockish
Jennifer Brown
An Brunelle
Maria and Michael Buhbe
Angela Burt
Jean and Vincent Butt
Trevor Byrne
Tracy Caldeira
Carmony Callaway
Marcella Camberos
Karen Causey
Pamela Cedrone
Claribelle Cendana
Cynthia Chaillie
Carole and Allan Chasin
Evelyn and Vince Chun
Emily Chung
Lea Cimbalist
Natalie Cinato
Patricia Coghlan
Bram Conley
Jack Cook
Herman Corteza
Elisabeth Costa de Beaugard
Birgit Crable
Susan Crane
Lacelle D'Angelo
Betty L. Dahlquist
and Paul Sherman
Carolyn De Mers
Catherine DeMonte
Yvonne Dearth
Ronald Deutsch
Regina Dillard
Lenore Dixon
William Dombrowski
Jason Dravis
Elizabeth A. Dudley
Jeff Eamer
David Eisner, M.D.
Lucely Escamilla
Yadira Escamilla
Sandra Escobar, Ph.D.
Stephen Essington
Stephanie Esteban
Terri K. Evans
Kathy Lee Farkas
Alice and Frank Farmanian

Amy Dean Fayazrad
Greg Fecht
Gloria Feldman
Javier Fernandez
James and Linda Fink
Cheryl Fong
Ellen and Andrew Frank
Mary Lynn Frein
Tami Friedrich
Elisa Fujiwara
Gary Galbraith
Adriana Garcia
Joe Albert Garcia
Carmina Gardner
Nicholas Gardner
Christine Geller
Gordon Gerson
Dawn Gillings
Doris Given
Wendy and John Gladwin
Ruth and Norman Goldberg
GoodSearch
Sherry Green and Gael Chandler
Betty and Alan Greenberg
Susan Greenberg
Dann Grindeman, M.F.T.
Lynn Winter Gross
Katherine Grossman
Cindy and Orlando Guiang
Kim Gustovich
Nina Gutin, Ph.D.
Anna Hall
Greg Hannahs
Richard Harer
Melanie Harrison
Rosalind Harrison
Patricia Hause
Steven Hayashi
Georgianne Henshaw
and Kenwood Youmans
Jennifer and Adam Herschman
Jacqueline R. Hill
Vanessa Holder
James Hong
Katherine Hopkins
Darin Hornbaker
Barbara J. Hornichter
Kristin Howard
William Hudson

Brenda Ingram
Bruce Ino
Julie Inouye
Eva Ivener
Janet Jacobs and Ted Fine
Amy C. Johnson
Nicole Jones
Sharon K. Jones
Chesleigh Jonker
Barbara Kabahar
April Kacena
Robin Kay
Nancy Kenworthy
Mana Khafaf
Jeffrey Kiernan
Ellen Kimmel
Christopher King
Richard D. Kirshberg
Beverley and David Kleeman
Robert Kleeman
Susan Klos
Lisa Koerbling
Stephen D. Koffman
Judy and Mitchell
Komaiko, M.D.
Kim Kowsky and Sheldon Cohn
Daniel Kravitz
June and Kenneth Kumagai
Karen and Doug Lam
Elizabeth Selzer Lang
Suzanne and Dave Larky
Matt Larson
Elizabeth Link
Megan Lawson
Elaine Leader, Ph.D.
Rob Lee
Richard Lefkowitz
Margaret Leibert
Barbara and Stanley Leiken, M.D.
Ann and Robert Lemmon
Ewan Leslie
Bette and Harvey Levy
Eric Lew
Floyd Lewis
Jan Lipschutz
Bonnie Lisle and Roy Weitz
Dana Liston
Janise Liu

Jen-Ting Liu	Shannon Nishi	Darren Ross	Pei Pei Tan
Ricardo Lopez, Jr.	Cynthia and Mark Nishinaka	Victoria Roth	Stephen Tanny
Christy Lorenz	Joyce Nishioka	Lisa K. Rowlett	Carrie Tayloe
John T. Lorick, III	and Wendy Fukuda	Larry Rubenstein	Jesse Tayloe
Tina S. Lounsbury	Gloria and Patrick O'Brien	David Rubin	Sierra Taylor
Lichin Ly	Michael O'Brien	Connie Ryan and Jon Fletcher	Valerie Terry
Michael Lynch	Dorothy O'Donnell	Kelly Sadamitsu	Laurel and Chad Tew
Matthew Lyon	Kerry O'Donnell	Gary Sakaguchi	Julia Throckmorton
Candace Macatangay	Vicki O'Neal	Bruce Saltzer	and Mike Shapiro
Macy's West	Jess and Alan Olifson	Henry Sanders	Shanna R. Tillman
United Way Campaign	Renee Opell	Jane and Tim Sanders	Carol and Philip Tipper
Stacey Maimin	Candace and Thomas Oshita	Ida Sands	Geoff Tipper
Sophia Majeed	James Parker	Eduardo Santillan	Ann-Marie Titcher
Molly and Richard Marcus	Linda Parr	Carole Sasaki	Brandon Toh
Debra and Victor Marrero	Robin and Hamant Patel	Blaire Schembari	Jason Tokunaga
Bobbie Mathers	Elizabeth Patrick	Fran Shagan Schenkel	Tricia Tomlinson
Colleen and Frank Mattoon, Jr.	Bill Patterson	Robert B. Schlesinger	Georgia Tredennick
James McDonald	Terrine Pearsall	Ken Schmidt	Dmitry Tuller
Brigid McDonough	Giselle Peisner	Bruce Schuman	Kristin Turner
April McDowell	Becky Pena	Claudia and Mark Schwartz	UCLA ISAP
John P. McGann	Charles Peterson	Maria and Ted Schwartz	Ken G. Unmacht
Deborah McGowan	Dorothea and Edward Pikul	Ruth Schwartz	Steve Uyemura
Hayward McNeill	Ellen Pittleman	Adam Schwarz	Rochelle Ventura
Lora McPhail	Sharyn Pohera	Sandra G. Segal	Rocio Villaseñor
Matthew Meyer	Sylvia and Martin Popok, M.D.	Angela Sellers	and Paul F. Rosenbaum
Stephen Meyers	Caron Post, Ph.D.	Trina Seltzer	Linda and Richard Vrana
Orit Michiel	Eva and Kevin Potter	Miriam and Henry Shapiro	Tasia Wagner
Joy Midman	Judith Pottle	Laqueta J. Shelton	Steve Wang
Barbara Minkoff	Ron Prince	Sylvia and Walter Sherwood	Wendy Wang
Masayoshi Miyazaki	Raime Quick	Lisa Shigeta	Irena Wantuch
Jennifer Moeller	Jessica Quintana	Laurie Shuman	Ellen and John Wardlaw, Jr.
Denise and Scott Mogil	Denise Quon and Gregory Tate	Sara Siebert	Angela Warling
Lyn and Corey Morris	Leonardo Ramil	Joanne and Robert Silva	Audrey and Charles Warren
Marilynne Morshead	Ana Ramirez	Sue Ann and Hanon Sinay, M.D.	Pamela Weisberg
Ron Mossler	Douglas Rand	Mashita Smiley	Barbara and James Wickline
Victoria Mulhall	Gail Ratzlaff	Linda Smith	Chris Wiebe
Gretchen Mullendore	Barbara W. Ravitz	Robert R. Solverson	Eric Wilkerson
Julie T. Munjack	Dana Reinhardt	Steven Spigarelli	Cheryl Williams
Patsy Nakatsuka	and Daniel J. Sokatch	Helen Steadman	Karen Williams
Linda and Gary Nathanson	Marsha Reyes	Seth Stevens	Kelly Williams
Terry Neil	Patricia Reyes	Travis Stewart	James Wilson
Tamra and Norman Nelson	Suzanne Richards	Bernadine Styburski	Kimberly Wong
Christian Nery	Cathy and Jeff Rogers	Maureen Tafoya	Sonja Wong
Irene Nevil	Regina Romeo	Ethel and Eric Takahashi	Wenise Wong and Eric Barron
Elaine and Arnold Ng	Dale Rose	Sharon Talovic, Ph.D.	Warren Woo
Joshua Nichols	Linda Rose-Winters	and Bill S. Garland	Mary Wood-Maloney
Kimberly Nishi	Mark Rosenbaum	Melissa Talvitie	Karen York
			Gregg Ziskind

IN-KIND

99 Cents Only Stores
Evelyn and Jerome Ackerman
Vivienne Adams
Alondra Aguayo
Keith Anyon
Aquarium of the Pacific
Armstrong Garden Center
Karmen Atayan
Megan Backer
Baypoint Mortgage, Inc.
Benihana, Inc.
Natalie Berkman
Dana and Mike Bermant
The Beverly Hilton
Fay Beyan
BJ's Restaurant Brewery
Rosemary Blegen
Amy and Todd Bomberg
Joan Borinstein
Bradford Renaissance Portraits
Joy Brenner
Bristol Farms
Brenda Brown
Julie Browne
Cynthia and Thomas Bryan
Kevin Butler
Stacey and Mike Calgano
California Pizza Kitchen
Sue Cantlin
Marcelo Carulli-Pena
Regina Cavanagh
Central Basin Municipal
Water District
Mary Chiappetta
Chicago Ribs
Children's Book World
Chile Verde
Chili's
Kristina Citi
Clementine
Coco's
Coffee Bean & Tea Leaf
Jill Cohen
Carmen Cooke
Nancy Cord
Cathey Dare
Niki Davis
Delta Gamma Sorority
Lisa G. Dempsey
Lynne and Irwin Deutch
The Walt Disney Company
Maureen Doerken
Suzanne Downey
Echo Horizon School
Elio's Fitness for Success
Bonnie Engle
Irene and Rudolph Estrada
Catherine Fellowes
Betty Fitzpatrick
Charlotte W. Fletcher, Ph.D.
and Jeremy Fletcher
Regina Ghaussi
Debra Gordon
Meg Graham
Faye Griffith
Lenore and Haskel Haim
Elizabeth and Robert Halista
Theresa Halista
Jennifer and Mark Hamaguchi
DeeDee Hoffman
Holly Street Bar and Grill
Hollywood Park
Hotel Mar Monte
Shelly and Seymore
Hudosh, M.D.
Image Entertainment, Inc.
In-N-Out Burger Foundation
Island's
Jamba Juice
Kasondra Jensen
Star Johnson
Rhonda Jones
Jongewaard's Bake-N-Broil
Kabuki
Kaiser Permanente
Ferre A. Kiani
Sharon M. Kopman
and Jason Kay
Sandri Kramer
James Krogel
Qiana R. La Croix
Diane Lansing
Sue Lappin
Alejandra Laredo
The Laugh Factory
Joanne and John Laurie
Rosalind Lee
Jennifer and Lee Leibman
Mary and Stanley D. Lelewer
Jennifer Lewis
Los Angeles Dodgers
Judith and Marvin Maltzman
Lelia and B. Robert Maltzman
Nichola Marble-Van Dam
Marmalade Cafe
Jane Marpet
Marshall's
McDonald's Corporation
Duane E. McWaine, M.D.
and David Huebner
Mervyn's
Maggie and Rick Mogil
Deana Morgan
Cheryl Moss
Morris Moussavieh
Gwen Myles
Lynn Nestle
New Age Electronics
Olive Garden
Pacific Asia Museum
Joyce Palmer
Pasadena Playhouse
Pavilions
Peet's Coffee
Jack Posen
Victoria Principal
Nancy Quach
Red Lobster
Redex Industries
Joanne and Hil Reyes
Angela Rich
Marlene L. Ritner
Michelle Robson
Deisy Rolon
Sharon and Rick Rosas
Melba Ross
Andrew E Rubin
Rubio's Baja Grill
Dulce M. Ruiz
Santa Monica Yoga
Susan Sawiki
Darrin Schnabel
See's Candies
Shelter Partnership, Inc.
Leigh Sietsama
Six Flags Magic Mountain
Skirball Cultural Center
Sony Pictures Entertainment
Patricia Soules
Soy Joy
Spago
Karine Srapyan
Starbucks Coffee
Stefano's
Alex Stephens
Paul Struhl
Toni L. Stutson
Debbie Tran
Kelly Underdown
Universal Studios
Lauren Vo
Western Bagel
Donna Williams
Leslie Wilson
Laurie Woodrow
Vickie Ycaza
Cheri Renfroe Yousem
Sheila Zison

RAISING AWARENESS

Erasing the Stigma 2008



From top left: Awards Chairs Beatrice Stern and Andrew E. Rubin; Thomas Whiteside, and Leadership Honorees Chuck Dean, Bridget Cantrell, Ph.D., emcee Christine Devine with President/CEO Kita Curry, Ph.D. and presenter Major Ray Kimball; Legacy Honoree Jilliene F. Schenkel and Patrice Hirsch Feinstein; Thomas Whiteside and Major Ray Kimball; The New Directions Choir, a veterans performing group; John Head, past honoree with Immediate Past Chair Cheri Renfroe Yousem and Treasurer Martin Frank

Thirteen years ago, Didi Hirsch launched the *Erasing the Stigma Leadership Awards* to honor advocates who have increased our understanding, compassion and hope for those with mental illness. Our 2008 awards focused on mental health in the military. Without attention to the needs of today's returning veterans, our service people will end up homeless, or victims of suicide like far too many veterans of past wars. Dr. Bridget Cantrell, the daughter of a Korean War vet and Chuck Dean, a Vietnam vet, accepted *Leadership Awards* for counseling and authoring books that have helped thousands of vets and their families prepare for and adjust to the ravages of war. *The Beatrice Stern Media Award* went to *Washington Post* columnists Anne Hull and Dana Priest for their exposé of the appalling neglect and abuse of returning veterans at Walter Reed Hospital. Accepting on their behalf, Tom Whiteside shared the story of his daughter Elizabeth, who faced a court martial and prison after attempting suicide while in Iraq. Philanthropist Jilliene Schenkel was honored with a *Legacy Award* for serving as the first Chair of these Awards and for her steadfast support of mental health services

RAISING AWARENESS

Alive and Running 2008



From top left: Nina Gutin, Ph.D. and daughter Jamie; Stan Lelewer Executive Vice Chair, Leah Shapiro Throckmorton, Kita Curry Ph.D. President/Ceo, and David Ryu Deputy to Supervisor Yvonne Burke; The Grand Starting Entrance; Julianne Grossman, race emcee with Andrew E Rubin Board and Race Chair; Some of the 3000 teen participants; The Memory Quilts

The 10th anniversary of the *Alive and Running Suicide Prevention 5K* walk/run found the event bigger and healthier than ever. Over 4,000 participants joined together to raise awareness and funding for suicide prevention services. This was the first race of the season for more than 3,000 teens from Students Run LA, a program that teaches youth to set and achieve goals by training for the LA Marathon. In an age group with one of the highest rates of suicide attempts, each received a blue wristband featuring the Suicide Prevention Center's hotline number. In memory of her teenaged daughter, Marilyn Nobori brought out the Taiko drum team, *Chikara Daiko*, from the Centenary United Methodist Church in Little Tokyo to energize runners at the start and finish line. Marilyn also put together a team of 61, the largest in the race. With classic Didi Hirsch team spirit, our Clubhouse members came to volunteer at dawn and raised almost \$1,500 in gratitude for the help they received during times of unbearable emotional pain.

Summary Financial Information

FEDERAL TAX ID# 95-1816023

STATEMENT OF ACTIVITIES	FY 07/08	FY 06/07
<i>Revenue</i>		
Government Contracts	\$ 20,924,000	\$ 19,868,000
Contributions and Grants	376,000	332,000
United Way	203,000	348,000
Special Events (Net)	244,000	304,000
Patient Fees	145,000	172,000
Donated Goods and Services	564,000	426,000
Other	172,000	234,000
Total Revenue	<u>\$ 22,628,000</u>	<u>\$ 21,684,000</u>
<i>Expenses</i>		
Personnel	17,314,000	16,499,000
Operating	2,444,000	2,294,000
Occupancy	1,672,000	1,582,000
Depreciation	594,000	594,000
Donated Goods and Services	564,000	426,000
Total Expenses	<u>\$ 22,588,000</u>	<u>\$ 21,395,000</u>
<i>Excess of Revenue over Expenses</i>	<u>\$ 40,000</u>	<u>\$ 289,000</u>
 STATEMENT OF FINANCIAL POSITION		
<i>Assets</i>		
Cash and Cash Equivalents	3,921,000	3,517,000
Accounts Receivable/Prepaid	1,608,000	2,192,000
Property and Equipment (Net)	4,590,000	4,649,000
Total Assets	<u>\$ 10,119,000</u>	<u>\$ 10,358,000</u>
<i>Liabilities</i>		
Accounts Payable/Accrued	3,785,000	3,963,000
Notes Payable	1,044,000	1,145,000
Total Liabilities	<u>\$ 4,829,000</u>	<u>\$ 5,108,000</u>
<i>Net Assets</i>	<u>\$ 5,289,000</u>	<u>\$ 5,250,000</u>
<i>Total Liabilities & Net Assets</i>	<u>\$ 10,118,000</u>	<u>\$ 10,358,000</u>

Audited financial statements are available upon request

Board of Directors

BOARD OFFICERS

Chair

STANLEY D. LELEWER

Executive Vice Chair

MARTIN J. FRANK

Vice Chairs

BEATRICE S. STERN

MICHAEL C. WIERWILLE

CHERI RENFROE YOUSEM

Treasurer

SHARON M. KOPMAN

Secretary

VERA JASHNI, ED.D.

Immediate Past Chair

ANDREW E RUBIN

BOARD MEMBERS

JONATHAN COWAN

CHARLOTTE W. FLETCHER, PH.D.

NATHANIEL JACKSON, PH.D.

JEFFREY KHTEIAN, C.I.D.

LEE LEIBMAN

JANINE B. LICHSTEIN

HOWARD M. LOEB

LAURA ORNEST

TODD M. RUBIN

Executive Staff

President/CEO

KITA S. CURRY, PH.D.

Vice President of Human Resources

CYNTHIA BRYAN, S.P.H.R.

Vice President of Clinical Operations

REBECCA J. GABA, PH.D., L.M.F.T.

Vice President of Finance and Administration

JOHN P. MCGANN, C.P.A.

Medical Director

DUANE E. MCWAIN, M.D.

Locations

HEADQUARTERS

4760 South Sepulveda Boulevard

Culver City, CA 90230

(310) 390-6612

CULVER-PALMS CENTER

11133 Washington Boulevard

Culver City, CA 90232

(310) 895-2300

EXCELSIOR HOUSE

1007 Myrtle Avenue

Inglewood, CA 90301

(310) 412-4191

INGLEWOOD CENTER

1111 North La Brea Avenue

5th and 7th Floors

Inglewood, CA 90301

(310) 846-2100 5th Floor

(310) 677-7808 7th Floor

JUMP STREET

1233 South La Cienega Boulevard

Los Angeles, CA 90035

(310) 855-0031

MAR VISTA CENTER

12420 Venice Boulevard

Suite 200

Los Angeles, CA 90066

(310) 751-1200

METRO CENTER

672 South La Fayette Park Place

Suite 6

Los Angeles, CA 90057

(213) 381-3626

S. MARK TAPER

FOUNDATION CENTER

1328 West Manchester Avenue

Los Angeles, CA 90044

(323) 778-9593

VIA AVANTA

Pacoima, CA

(818) 897-2609

Transforming Lives Since 1942

Since 1942, Didi Hirsch Mental Health Services has treated more than half a million people, promoting a better quality of life for residents throughout Los Angeles County. As the first non-profit mental health outpatient clinic in Los Angeles, Didi Hirsch was initially founded to help adults cope with the aftermath of the Great Depression. Over the years, Didi Hirsch has evolved in response to the needs of our increasingly complex community.

Through the leadership and generosity of Mrs. I Kingdon (Didi) Hirsch, in 1974 the agency became one of the first comprehensive community mental health centers in Los Angeles County. The agency was subsequently renamed to honor Didi Hirsch.

Today, we offer a broad array of mental health and substance abuse programs, serving more than 44,000 children, adults and families at our nine locations each year. The Didi Hirsch Suicide Prevention Center and Crisis Line was the nation's first and has helped those in need since 1958.